

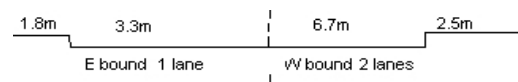
YEAR 2018

CORE STATION 1107

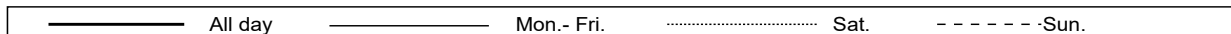
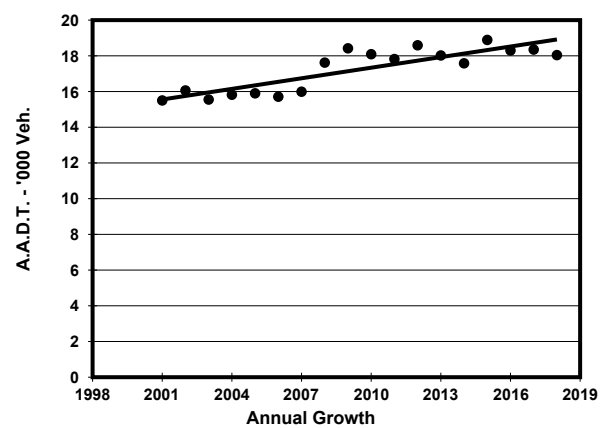
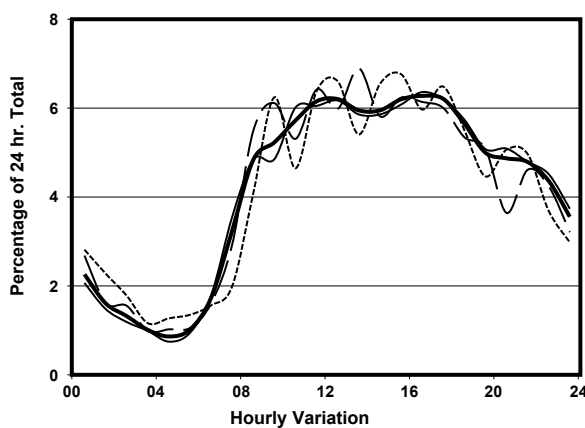
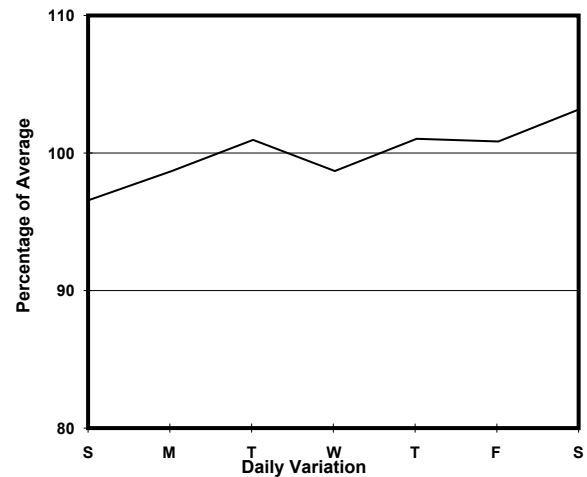
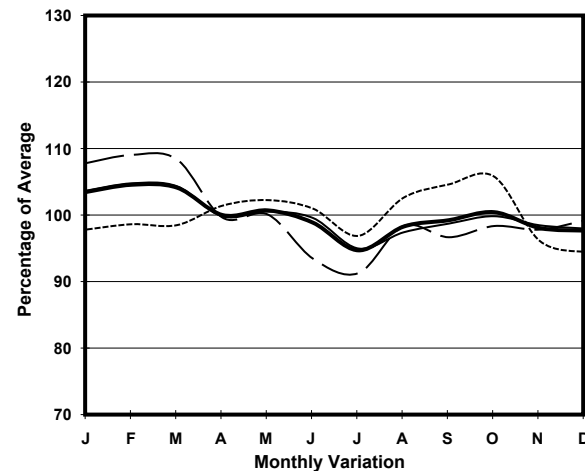
ROAD NETWORK MINOR

ROAD TYPE LOCAL DISTRIBUTOR

LINK TUNG LO WAN RD (from CAUSEWAY RD to MORETON TERRACE)



1. TRAFFIC FLOW VARIATION AND GROWTH



2. TRAFFIC CHARACTERISTICS (BY DIRECTION)

Parameter	All - Day	Mon. - Fri.	Sat.	Sun.
EAST BOUND				
A.A.D.T.	3460	3380	3780	3570
R 12 / 24 - %	68.3	68.5	68	67.5
R 16 / 24 - %	87.9	88.5	86.4	86.8
AM Peak Hour	0900-1000	0900-1000	0900-1000	0900-1000
One-way flow at AM peak hour	210	200	240	220
T - % (AM)	-	-	-	-
PM Peak Hour	1600-1700	1600-1700	1800-1900	1800-1900
One-way flow at PM peak hour	200	210	230	230
T - % (PM)	-	-	-	-
Prop.of commercial vehicles - 16 hr.	-	0.8	-	-
WEST BOUND				
A.A.D.T.	14580	14710	14810	13900
R 12 / 24 - %	67.5	67.4	68.9	66.4
R 16 / 24 - %	86.4	86.8	86.2	84.3
AM Peak Hour	0900-1000	0800-0900	0900-1000	0900-1000
One-way flow at AM peak hour	730	700	890	870
T - % (AM)	-	12.5	-	-
PM Peak Hour	1600-1700	1600-1700	1600-1700	1700-1800
One-way flow at PM peak hour	930	950	940	970
T - % (PM)	-	9.4	-	-
Prop.of commercial vehicles - 16 hr.	-	7.5	-	-

3. OTHER INFORMATION AND COMMENT

4. Vehicle classification and occupancy - Monday to Friday

Time		Class of vehicle									
		Motor Cycle	Private Car	Taxi	Private LB	PLB	Goods veh.		Non Fr. Bus	Fr. Bus	
							Light	M & H		SD	DD
0700-0800	Pro	1.7	30.6	27.9	9.6	0.0	10.5	0.0	15.7	0.7	3.3
	Ocp	1.0	1.3	1.9	13.2	0.0	1.3	0.0	31.7	33.3	21.1
0800-0900	Pro	1.5	61.4	16.0	2.4	0.0	9.2	1.5	4.4	0.2	3.5
	Ocp	1.0	1.4	1.7	4.6	0.0	1.8	1.7	8.1	18.0	19.1
0900-1000	Pro	2.3	67.8	8.1	0.6	0.0	15.7	0.6	1.7	0.3	2.9
	Ocp	1.0	1.4	1.8	5.0	0.0	1.7	3.0	4.7	19.0	15.3
1000-1100	Pro	2.2	56.1	20.8	1.1	0.0	14.6	0.0	2.2	0.3	2.7
	Ocp	1.0	1.5	1.6	4.5	0.0	1.5	0.0	4.3	5.5	12.8
1100-1200	Pro	2.1	55.4	24.8	0.0	0.0	12.4	0.0	2.6	0.1	2.6
	Ocp	1.0	1.4	1.5	0.0	0.0	1.5	0.0	2.2	14.0	14.1
1200-1300	Pro	3.5	52.0	25.3	0.9	0.0	14.4	0.4	1.7	0.1	1.6
	Ocp	1.0	1.6	1.5	5.5	0.0	1.6	1.0	6.5	20.0	18.5
1300-1400	Pro	3.3	58.0	16.7	0.0	0.0	16.7	1.7	1.1	0.3	2.1
	Ocp	1.0	1.4	1.8	0.0	0.0	1.4	1.7	1.5	10.0	12.7
1400-1500	Pro	5.4	50.5	27.3	0.0	0.0	13.1	0.0	1.2	0.0	2.5
	Ocp	1.1	1.5	1.6	0.0	0.0	1.7	0.0	3.0	0.0	11.4
1500-1600	Pro	2.4	57.5	21.2	2.4	0.0	7.9	2.4	3.6	0.5	2.1
	Ocp	1.0	1.3	1.9	4.3	0.0	1.7	1.8	3.0	16.0	13.1
1600-1700 Peak hour	Pro	5.9	49.7	27.0	3.8	0.0	5.9	0.5	4.9	0.0	2.2
	Ocp	1.1	1.6	1.4	4.1	0.0	1.7	2.0	4.6	0.0	11.2
1700-1800	Pro	3.5	47.6	31.4	3.0	0.0	7.6	0.0	4.1	0.1	2.7
	Ocp	1.1	1.5	1.4	8.7	0.0	1.3	0.0	6.0	37.0	9.8
1800-1900	Pro	6.6	51.7	31.3	0.0	0.0	5.4	0.0	1.8	0.2	3.0
	Ocp	1.2	1.5	1.7	0.0	0.0	1.3	0.0	6.0	43.0	15.8
1900-2000	Pro	6.4	51.2	34.7	0.0	0.0	3.7	0.0	1.6	0.4	2.0
	Ocp	1.0	1.4	1.7	0.0	0.0	1.9	0.0	5.3	26.7	10.3
2000-2100	Pro	3.7	40.6	49.7	0.0	0.0	1.1	1.1	1.1	0.1	2.5
	Ocp	1.0	1.4	1.5	0.0	0.0	1.5	1.0	3.0	23.0	7.3
2100-2200	Pro	3.4	39.6	51.1	0.0	0.0	2.9	0.0	0.6	0.0	2.4
	Ocp	1.0	1.7	1.5	0.0	0.0	1.0	0.0	4.0	0.0	7.6
2200-2300	Pro	3.0	47.9	44.9	0.0	0.0	0.8	0.0	0.8	0.0	2.6
	Ocp	1.0	1.6	1.6	0.0	0.0	2.0	0.0	1.0	0.0	6.7
16 hours	Pro	3.6	51.7	28.3	1.3	0.0	9.0	0.5	2.8	0.2	2.5
	Ocp	1.1	1.5	1.6	7.7	0.0	1.6	1.7	10.9	21.4	13.2

Legend

Pro. Proportion of vehicles in % (Sum may not add up to 100% due to figure rounding)*

Ocp. Average occupancy of vehicles including both driver and passengers*

M&H Medium and Heavy

***** All traffic data are collected from combined bounds except for one way traffic